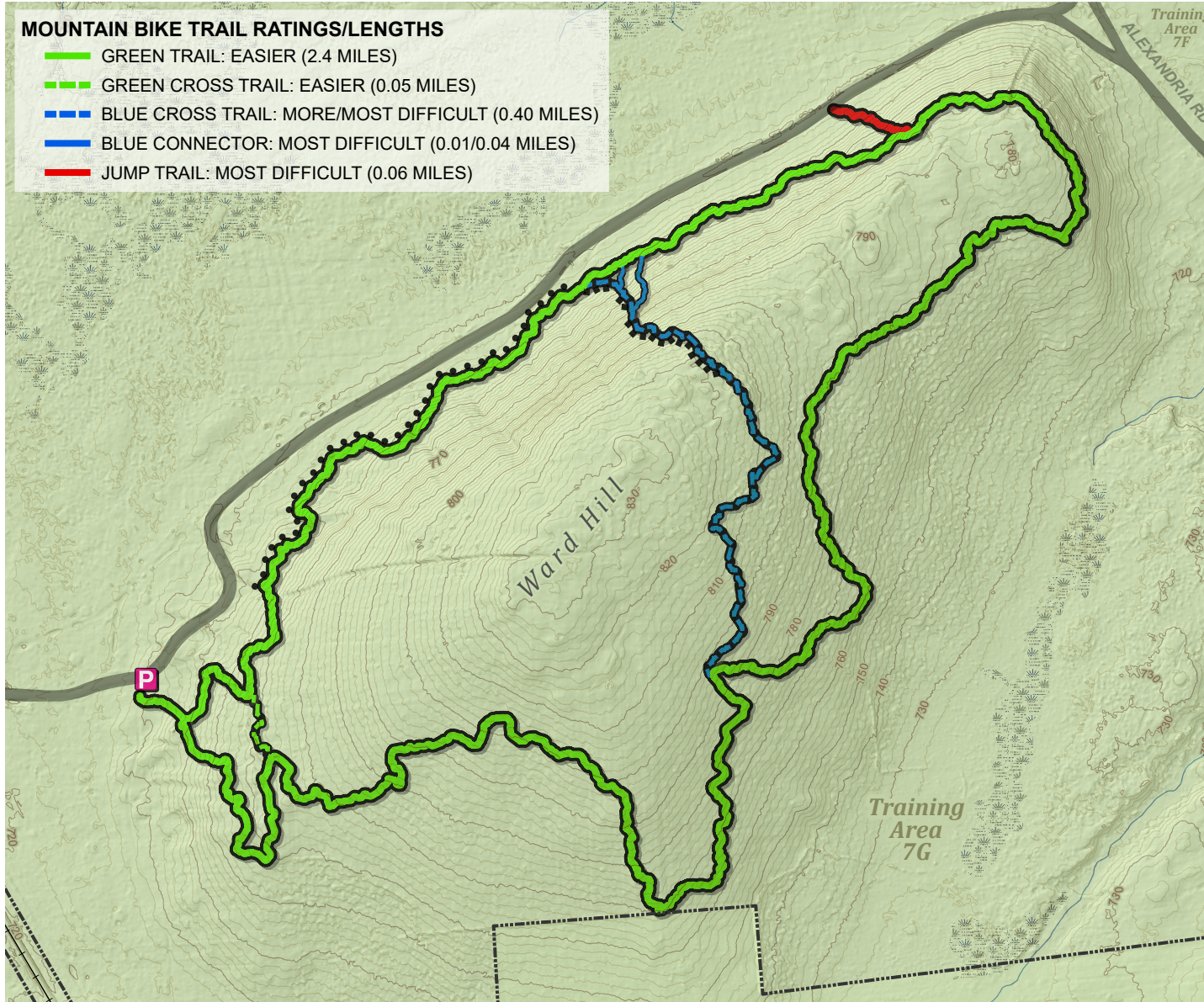


WARD HILL MOUNTAIN BIKE TRAILS

TRAINING AREA 7G, FORT DRUM MILITARY INSTALLATION, FORT DRUM, NEW YORK



MOUNTAIN BIKE TRAIL RATINGS/LENGTHS

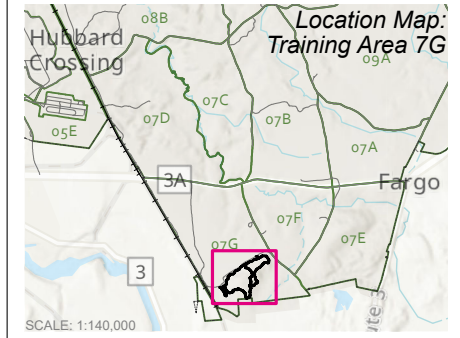
- GREEN TRAIL: EASIER (2.4 MILES)
- - - GREEN CROSS TRAIL: EASIER (0.05 MILES)
- - - BLUE CROSS TRAIL: MORE/MOST DIFFICULT (0.40 MILES)
- BLUE CONNECTOR: MOST DIFFICULT (0.01/0.04 MILES)
- JUMP TRAIL: MOST DIFFICULT (0.06 MILES)

TRAIL FEATURES

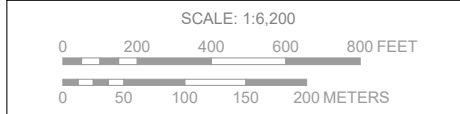
- P PARKING (ALONG ROAD)
- DIRT TRAIL (4-FT WIDE / 3.0 MILES)
- FLOW TRAIL (0.40 MILES)
- ■ ■ TRAIL SECTION MOST DIFFICULT

MISC FEATURES

- FOREST COVER
- WETLAND
- INSTALLATION BOUNDARY
- RANGE ROAD (GRAVEL)
- + + + RAILROAD
- INDEX CONTOUR
- NON-INDEX CONTOUR
- ~ STREAM



Orthoimagery: Esri, NASA, NGA, USGS, Province of Ontario, Esri Canada, Esri, TomTom, Garmin, SafeGraph, GeoTechnologies, Inc, METI/NASA, USGS, EPA, NPS, USDA, USFWS, NRCAN, Parks Canada



UNITED STATES ARMY GARRISON - FORT DRUM
 DIRECTORATE OF PUBLIC WORKS
 ENVIRONMENTAL DIVISION - GIS/MAPPING OFFICE
 TEAMS: 520-673-0408/CELL: 315-408-5089

DATA SOURCES
 Vector: ISDB

REPRODUCE IN COLOR ONLY
 ELEVATIONS IN FEET
 CONTOUR INTERVAL 2 FEET
 UNCLASSIFIED



THIS MAP IS FOR PLANNING PURPOSES ONLY. IT SHOULD NOT BE USED FOR DESIGN, CONSTRUCTION, OR TARGETING. QUESTIONS OR UPDATES TO THE DATA REPRESENTED HERE SHOULD BE DIRECTED TO THE FORT DRUM DIRECTORATE OF PUBLIC WORKS (DPW), ENVIRONMENTAL DIVISION-GIS/MAPPING OFFICE. UPON COMPLETION OF SERVICE OR INTENDED MISSION SUPPORT OF THIS DOCUMENT IT MUST BE PROPERLY DISPOSED OF AS PER THE CLASSIFICATION LEVEL.